

PolyPower Basic

ASP P6-72 Series 330W-345W

Polycrystalline PV-module



QUALITY & RELIABILITY

Best raw materials, optimized production process and accurate testing makes the quality difference



GERMAN ENGINEERING

Best design by the art of German engineering



SAVE INVESTMENT

Product warranty of 12 years
and performance warranty of 25 years



POSITIVE PERFORMANCE TOLERANCE

Up to +5 W plus-tolerance on output



FOR ALL ENVIRONMENTAL CONDITIONS

Resistant against PID, sand, salt and ammonia



STABLE AND STRONG

Capable to bear heavy snow loads up to 5400 Pa
and wind loads up to 2400 Pa

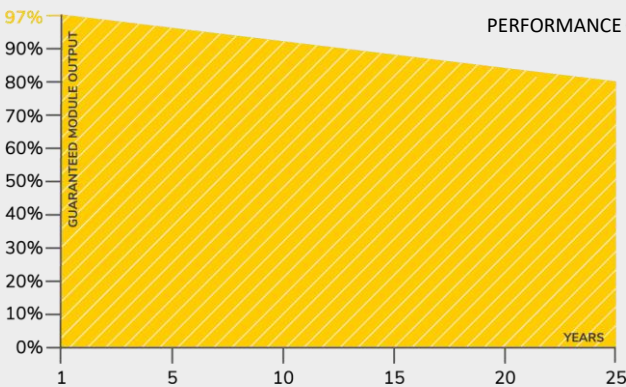


12 YEARS
PRODUCT WARRANTY

OUR PERFORMANCE GUARANTEE



25 YEARS
PERFORMANCE GUARANTEE



CERTIFICATES

SGS
TÜV
SAAR

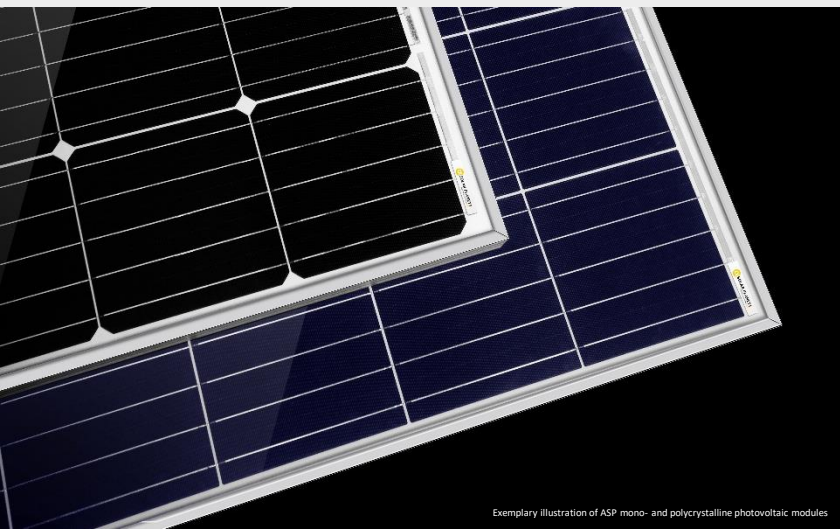
IEC 61215
IEC 61730
PERIODICAL
INCEPTION

SGS

PID RESISTANT
SALT MIST RESISTANT
SAND RESISTANT
CORROSIVE GAS (NH₃)

CE

CEC



α SOLAR PLANET
Enjoy the quality difference

PolyPower Basic Module

ASP P6-72 Series 330W-345W

TECHNICAL DATA

		ASP330P6-72	ASP335P6-72	ASP340P6-72	ASP345P6-72
Maximum power	P _{max} (Wp)	330	335	340	345
Maximum power voltage	V _{mp} (V)	36.97	37.05	37.09	37.14
Maximum power current	I _{mp} (A)	8.93	9.04	9.17	9.28
Open-circuit voltage	V _{oc} (V)	45.89	45.93	45.97	46.01
Short-circuit current	I _{sc} (A)	9.37	9.41	9.44	9.61
Module efficiency	%	17.01	17.26	17.52	17.78
Power tolerance	P _{max} (W)		0/+5		
Maximum system voltage DC	V		1000		
Operating temperature	°C		-40 to +85		
Temperature coefficients of P _{max}	% / °C		-0.40		
Temperature coefficients of V _{oc}	% / °C		-0.31		
Temperature coefficients of I _{sc}	% / °C		0.05		
Nominal operating cell temp. (NOCT)	°C		45±2		

The electrical data apply to standard test conditions (STC): Irradiance of 1000 W/m² with spectrum AM 1.5 and a cell temperature of 25°C.

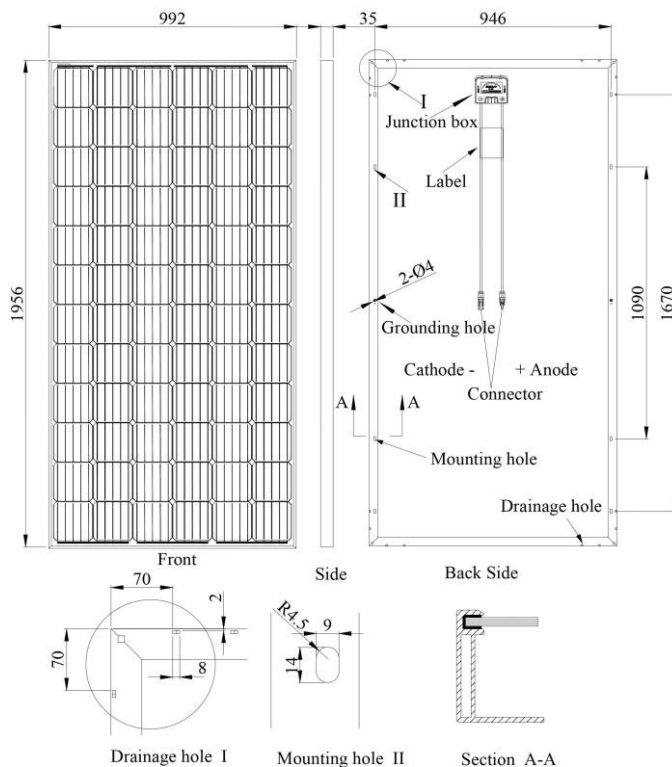
MATERIAL CHARACTERISTICS

Cell type	Polycrystalline 156.75 x 156.75 mm
No. of cells	72 (6 x 12)
Dimensions	1956 x 992 x 35 mm
Weight	20.0 kg
Junction box	IP67 rated
Output cable	4 mm ² , 1100 mm length
Connector type	MC4 / MC4 compatible
Hail resistance	Max. Ø 28 mm, at 23 m/s
Wind load	2400 Pa / 244 kg / m ²
Mechanical load	5400 Pa / 550 kg / m ²

PACKING INFORMATION

Packing configuration	64 pcs / double pallet
Loading capacity	768 pcs / 40 HQ
Size / pallet	1985 x 1120 x 2390 mm
Weight	1395 kg / pallet

DRAWINGS



Alpha Solar Planet GmbH
Schwalbenweg 1 g, 86343 Königsbrunn
GERMANY

Tel.: +49 8231 99190 70
Fax: +49 8231 99190 89

E-mail: sales@a-s-p.solar
Web: www.a-s-p.solar

